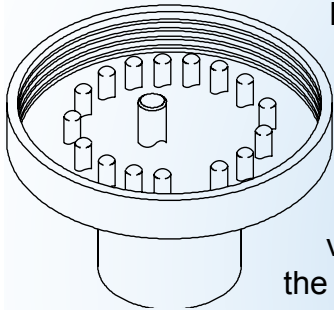


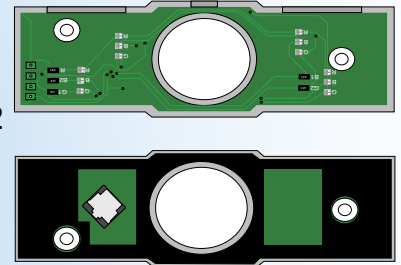
PREMIUM TECH NEWS

Jacuzzi Premium Technical Support Department

Multicolor Lights



If you run into a scenario where the main light and the waterfall light are not in sync, or if the random feature stops after a period of time and remains a constant color, try replacing the main light first. If there is a problem with the main light (be it a chip or capacitor, etc.), it will affect the lights downstream (the waterfall lights). If you verify 12 volts AC coming out of the main circuit board, then the problem is going to be with either the main spa light or the waterfall lights. Always try the main light first, it is the easiest to replace.



New Filling Adapter (6540-329)

Jacuzzi Premium has created a new filling adapter to help eliminate air locks created from improperly filling a spa. Screw the end of the garden hose into the female receptacle of the filler tool (Figure 1, Part A). Install the filler tool into the non-grated filter wall fitting (Figure 2, Item B). Turn the hose on fully until the spa is full. Remove the filler tool and install the filter. This helps force the water to flow throughout the pumps (circulation pump and main two-speed jet pump) to force any trapped air out of the system. If a "FLO" condition occurs on the control panel, install the filler tool into the grated (Figure 2, Item A) filter wall fitting and run water for a few additional minutes to purge the air from the circulation pump. This tool comes standard with all J-310 models and can be ordered as needed for other models.

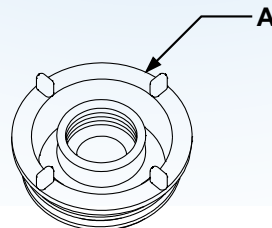


Figure 1

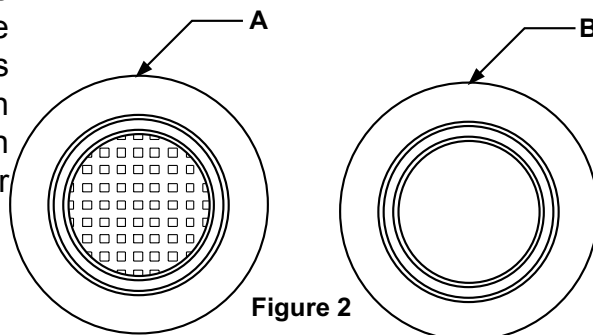
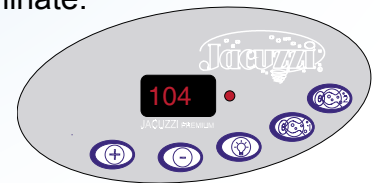


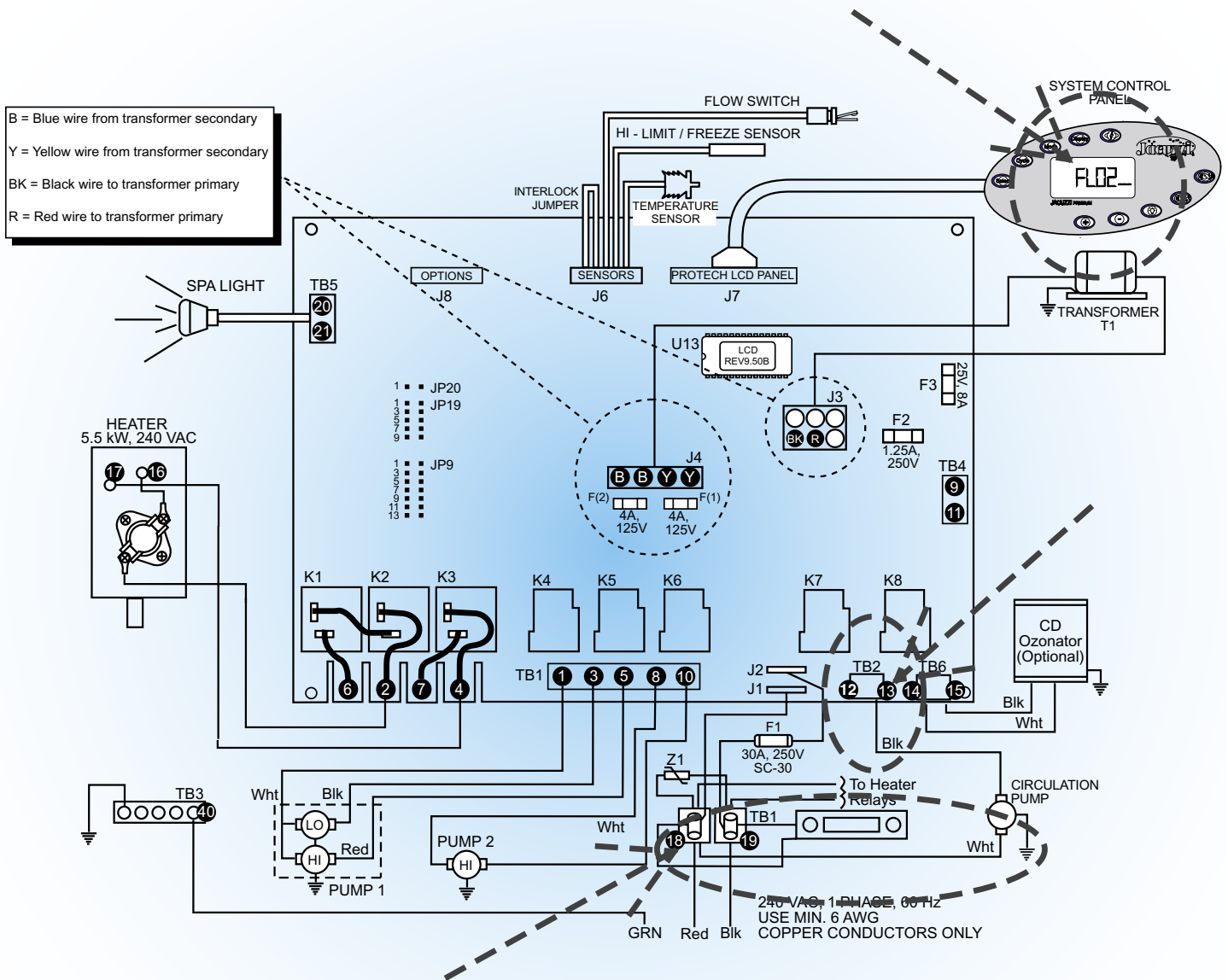
Figure 2

Scrolling LED Topsides

If you encounter scrolling LED topsides, or any strange error messages, this is most likely a problem with the topside. Always try plugging in a spare topside first because this is the easiest thing to eliminate.



FLO2 Error Message

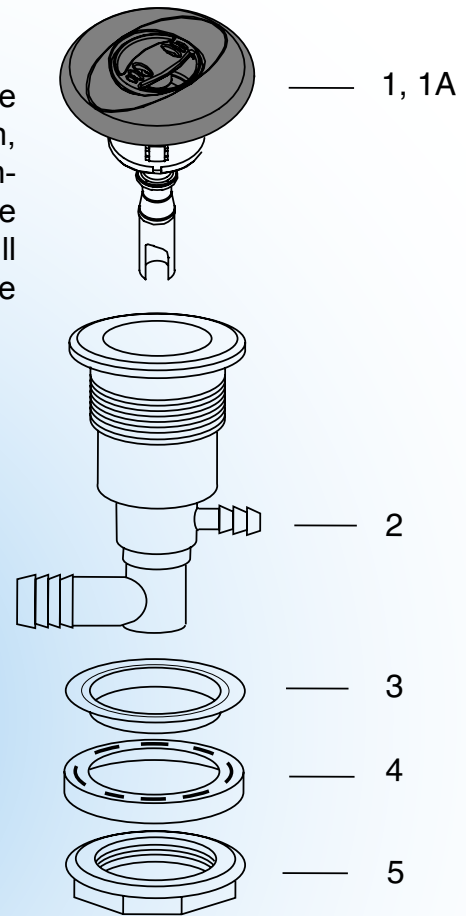


Technical Support has received a number of calls regarding the FLO2 error message on ProTech LCD models. When an LCD spa is powered up, the circuit board checks for an open flow switch before it will allow any component, including the circulation pump, to turn on. If the flow switch is already closed, the system will shut everything down except freeze protection (ICE2). The most common cause for this error is the incorrect wiring of the circulation pump. This may happen after replacing a circuit board, at the factory (very rare), and even from an "electrician" who wants the circulation pump to run 24 hours no matter what. If you encounter a "FLO2" error message on an LCD model spa, the first thing to do would be to visually inspect the flow switch for any debris which may be holding it closed. The next step is to check that the circulation pump is wired correctly. The white wire of the circulation pump connects where the incoming red wire connects at the main power terminal block (TB1, position #18). The black connects on the circuit board (TB2, position #13). If these two easily inspected items check out, then it could be either a bad connection with the flow switch or (extremely rare) bad relays on the circuit board.

New Mini PowerPro DX

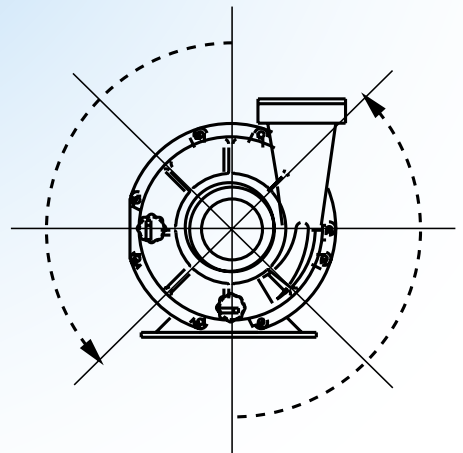
The new Mini PowerPro DX is here! This new design brings back the option to have the water flow opened or closed. In the closed position, it will still allow approximately 7% water flow so as to not create potential pressure problems. The new jet faces are not retro-fittable to the older style. We have supplied the part numbers for ordering. This will also be in the updated parts catalog, which should be available on the dealer community website in late August.

Item	Description	JP #
1	Jet: Face Mini PowerPro, Rotational	6540-829
1A	Jet: Face Mini PowerPro, Directional	6540-830
2	Jetback: Mini PowerPro	6540-341
3	O-ring: Mini PowerPro	6540-333
4	Washer: Self Level Mini PowerPro	6540-332
5	Nut: Mini PowerPro	6540-334



New Universal Pump Heads!

All Jacuzzi Premium 60Hz pumps manufactured after July 2003 include a new universal pump head design. These pumps allow our field technicians to rotate the wet end to any one of eight angles (every 45°). This allows for replacing any like size pump in any 2002+ Jacuzzi Premium spa! Now you need to stock only four pumps in your inventory (one 2.5hp 2sp, one 2.5hp 1sp, one 2hp 1sp, and one 1.5hp 2sp) instead of the many different configurations to service all 2002+ Jacuzzi Premium spas. This is huge!

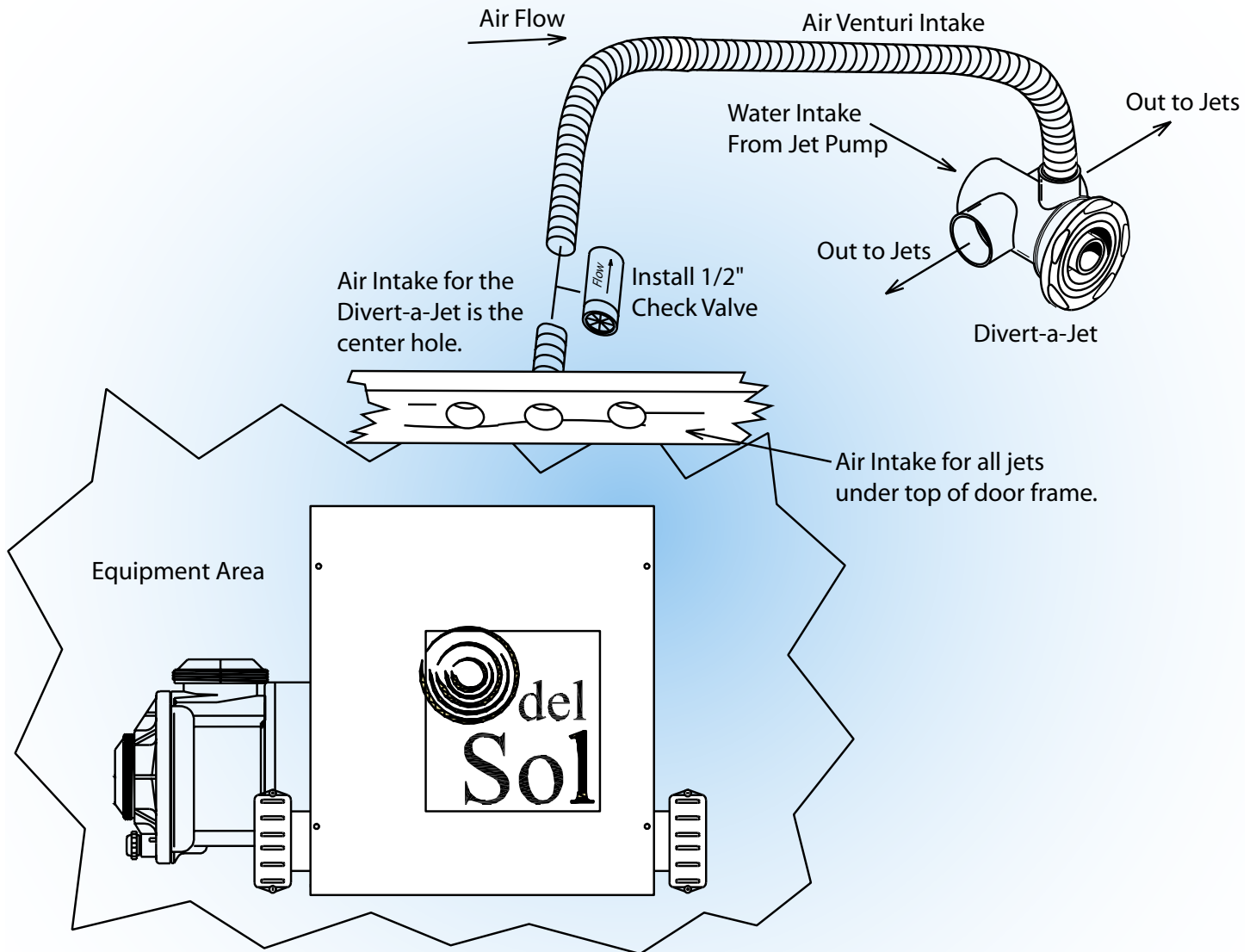


To adjust the pump wet end angle in the field:

1. Loosen and remove the four pump head retaining screws at the back of the motor.
2. Keeping the motor stationary, gently rotate the pump head (wet end) to the desired angle. The pump head will rotate freely on the motor shaft! **DO NOT TILT OR FORCE!**
3. Tighten the four pump head retaining screws, then install and test the pump.



The Redondo



At the beginning of 2003, a limited number of Del Sol Redondo models were misshipped without the 1/2" check valve installed on the air intake line for the Divert-a-Jet. This will be indicated by water leaking from the end of the intake located in the door frame as shown in the figure above. In order to correct this problem, you will need to install a 1/2" check valve (part #6540-278) in line on the air intake line. For the correct hose and approximate position to install the check valve, please see the illustration above.

4