

North America 60Hz Circuit Board History

The tables below outline the progression or history of Circuit Boards used in our hot tubs since 2002.
(Part Numbers Are Subject to Change Without Notice)

J-LX & J-LXL Series Circuit Boards

Series	Model Year	Circ.	Jet Pumps	Original Bd. ►	Current Bd. ▼	Logic Chip
J-LX	2011+	Yes	1	6000-167	6600-726	3.61

J-500 Series Circuit Boards

Series	Model Year	Circ.	Jet Pumps	Original And Current Board ▼	Logic Type
J-500 Series*	06/2018+	Yes	2	6600-427 <i>(*Encrypted board - Not Compatible with older model control panels)</i>	2.00
	2015-05/2018	Yes	2	6600-885	Microprocessor

J-400 LCD Series Circuit Boards

Series	Model Year	Circ.	Jet Pumps	Original Bd. ►	Replaced by ►	Replaced by ►	Current Bd. ▼	Logic Type
J-475 J-485 J-445 J-435	2019+	Yes	2	6600-478				
J-445* J-435*	04/2018-2018	Yes	2	6600-430 <i>(*For 04/2018+ J-445 & J-435 Models Only)</i> <i>(*Encrypted board - Not Compatible with older model control panels)</i>			2.00	
	10/2017-03/2018			6600-266 <i>(*For 10/2017-03/2018 J-445 & J-435 Models Only)</i>			Microprocessor	
J-400 Series*	04/2018+	Yes	3	6600-476 <i>(*Encrypted board - Not Compatible with older model control panels)</i>			2.00	
			2	6600-422 <i>(*Not Compatible with 04/2018+ J-445 & J-435 Models)</i> <i>(*Encrypted board - Not Compatible with older model control panels)</i>			2.00	
	09/2015-03/2018	Yes	1 or 2	6600-766 <i>(*Not Compatible with 10/2017-03/2018 J-445 & J-435 Models)</i>			Microprocessor	
			3	6600-768 (J-495 Only)				
	2010-08/2015	Yes	2	Purchased as complete J-1000 Load Box Only (Page 34)				
2006-2009	Yes	2	6600-098	6600-161	6600-180	6600-728	Microprocessor	

J-300 LCD & J-300 LED Series Circuit Boards

Series	Model Year	Circ.	Jet Pumps	Original Bd. ►	Replaced by ►	Replaced by ►	Current Bd. ▼	Logic Type
J-300 LCD*	06/2018+	Yes	1	6600-412 <i>(*Encrypted board - Not Compatible with older model control panels)</i>			2.00	
			2	6600-420 <i>(*Encrypted board - Not Compatible with older model control panels)</i>			2.00	
	2016-05/2018	Yes	1	6600-786			Microprocessor	
			2	6600-784				
J-300 LED	2014-2015	Yes	1	6600-295	N/A	N/A	6600-296	3.82
			2	6600-293	N/A	N/A	6600-297	
	2002-2013	Yes	1 <small>(Except 02-03 J320 & 05-07 J325)</small>	6600-086	6600-286	6600-044	6600-724	3.61
2 <small>(And 02-03 J320 & 05-07 J325)</small>	6600-088	6600-288	6000-167	6600-726				
J-300 LCD	2002-2006	Yes	2	6600-092	6600-180		6600-730	Microprocessor

J-200 Series Circuit Boards

Series	Model	Circ.	Jet Pumps	Original Bd. ►	Replaced by ►	Replaced by ►	Current Bd. ▼	Logic Type
2018+ J-200	All Models	No	1 or 2	6600-268			Microprocessor	
2016-2017 J-200	J-225 & J-215	No	1	6600-722			5.60	

Circuit Boards

North America 60Hz Circuit Board History (Continued)

J-200 Series Circuit Boards (Continued)

2005-2017 J-200 LED	J-210 & J-220	No	1	6600-089	6600-289	6600-042	6600-722	5.60
	J-230, J-245, J-235, J-270, J-275, J-280 & J-285	No	1 or 2	6600-087	6600-287	6600-046	6600-720	
		Yes	1 or 2	6600-088	6600-288	6000-167	6600-726	3.61

J-100 Series Circuit Boards

Series	Model	Circ.	Jet Pumps	Original And Current Board ▼			Logic Type
2018+ J-100	All Models	No	1 or 2	6600-268			Microprocessor
2017 J-100	All Models	No	1	6600-722			5.60
			2	6600-720			5.60

Del Sol Series 1-Pump Circuit Boards

Series	Model Year	Circ.	Jet Pumps	Original Bd. ►	Replaced by ►	Replaced by ►	Current Bd. ▼	Logic Type
Del Sol	2004+	No	1	6600-089	6600-289	6600-042	6600-722	5.60

North America Replacement Circuit Board Matrix 1 of 2 (60Hz)

Series	Model Year	Affected Models	Part #	Page
J-LX & J-LXL	2011+	ALL J-LX & J-LXL Models	6600-726 (Note 1)	18
J-500 LCD	06/2018+	J-585, J575	6600-427 (Note 7)	18
	2015-05/2018	J-585, J-575	6600-885	18
J-485 J-475 J-445 J-435	2019+	J-485, J-475, J-445, J-435	6600-478 (Note 7)	18
J-445 J-435	04/2018-2018	J-445 & J-435 Only	6600-430 (Note 7)	18
J-400	04/2018+	J-495	6600-476 (Note 7)	18
		J-480, J-470, J-425, J-415 (Not for J-445 & J-435)	6600-422 (Note 7)	
J-445 LCD J-435 LCD	10/2017-03/2018	J-445 & J-435 Models Only	6600-266	19
J-400 LCD	09/2015-03/2018	J-495	6600-768	19
		J-480, J-470, J-465, J-425, J-415 (Not for J-445 & J-435)	6600-766	
J-400 (Complete J-1000 System Load Box)	2012-08/2015	J-495	6600-400	36
	2013-08/2015	J-480, J-470, J-465, J-425, J-415	6600-401	
	2012	J-480, J-470, J-465, J-460, J-425, J-415		
	Mid 12/2009-2011	J-480, J-470, J-465, J-460	6600-305	
J-400 LCD	2006 - Mid 12/2009	J-480, J-470, J-465, J-460	6600-728 (Note 2)	19
J-300 LCD	06/2018+	J-385, J-375, J-365, J-355, J-345, J-335	6600-420 (Note 7)	20
		J-325, J-315 (Convertible and 240V Models)	6600-412 (Note 7)	
	2016-05/2018	J-385, J-375, J-365, J-355, J-345, J-335	6600-784	20
		J-325, J-315 (Convertible and 240V Models)	6600-786	
J-300 LED	2014-2015	J-385, J-375, J-365, J-355, J-345, J-335	6600-297 (Note 4)	21
		J-325, J-315 (Convertible Models)	6600-296 (Note 4)	
	2012-2013	J-375, J-365, J-355, J-345, J-335	6600-726 (Note 5)	
		J-325, J-315 (Convertible Models)	6600-724 (Note 3)	
	2008-2011	J-375	6600-726 (Note 5)	
		J-325 (120/240V Convertible Model)	6600-724 (Note 3)	
	2007-2011	J-365, J-355, J-345, J-335	6600-726 (Note 5)	
		J-315 (Convertible Models)	6600-724 (Note 3)	

Circuit Boards

North America Replacement Circuit Board Matrix 2 of 2 (60Hz)

Series	Model Year	Affected Models	Part #	Page
J-300 LED (Continued)	2005-2007	J-325 (240V Model)	6600-726 (Note 5)	21
	2002-2006	J-345, J-340, J-335, J-330		
	2002-2003	J-320 (240V Model)		
	2002-2006	J-315, J-310 (Convertible Models)	6600-724 (Note 3)	
	2004	J-325 (Convertible Models)		
J-300 LCD	2002-2006	J-375, J-370, J-365, J-360, J-355, J-350	6600-730 (Note 6)	22
		J-385, J-380	6600-101	
J-200 LCD	2018+	J-280, J-275, J-245, J-235 (No Circ.)	6600-268	22
		J-225, J-220, J-215, J-210 (Convertible Models)		
J-200 LED	2014-2017	J-280, J-275, J-245, J-235 (No Circ.)	6600-720	22
		J-225, J-220, J-215, J-210 (Convertible Models)	6600-722	
	2012-2013	J-280, J-275, J-270, J-245, J-235, J-230 (No Circ.)	6600-720	
		J-210 (Convertible Models)	6600-722	
	2007-2012	J-280, J-270, J-230 (with Circ.)	6600-726 (Note 5)	23
	2008-2011	J-230 (with Circ.)	6600-726 (Note 10)	
	2005-2011	J-230 (No Circ.)	6600-720	22
	2007 (Mid Year) - 2011	J-280, J-270 (with Circ.)	6600-726 (Note 10)	23
		J-280, J-270 (No Circ.)	6600-720	22
	2005-2007	J-230		6600-722
	2005-2008	J-220 (Convertible Models)		
2005-2011	J-210 (Convertible Models)			
J-100 LCD	2018+	J-115, J-125, J-135, J-145	6600-268	24
J-100 LED	2017	J-115, J-125	6600-722	24
		J-135, J-145	6600-720	
Del Sol	All Years	Del Sol Redondo, Hermosa	6600-722 (Note 8)	24
Echo (All)	Prior to 2002	J135/S260, Z235/S270, Z240/S280, Z255/R560	2600-005	24
		Z112 (S710) Analog	2600-020 (Note 9)	
		Z112 (S710) Digital	2600-024	
Platinum (All)	Prior to 2002	R310, R300, R290, R280, R270	2600-011	
Select (All)	Prior to 2002	M450, R275, R295, J140 (1/2 hour filter cycle)	2600-014	
		K010	2600-015	
		R400	2600-020 (Note 9)	

Note 1: Replaced 6000-167 board.

Note 2: Replaced 6600-180, 6600-161 and 6600-098 boards in 2015+.

Note 3: Original 6600-286 and replacement 6600-044 boards have been replaced by the 6600-724 board (not illustrated).

Note 4: Original ~~6600-293~~, ~~6600-295~~ boards replaced by 6600-297, 6600-296 boards.

Note 5: Replaced 6000-167 & 6600-288 boards in the summer of 2013 (Configuration Instructions Included with new board).

Note 6: Replaced 6600-180 and 6600-092 boards in 2015+.

Note 7: Encrypted Board, not compatible with older model control panels.

Note 8: Replaced 6600 and 6600-289 boards.

Note 9: This system must be converted to a digital controls. Call for details.

Note 10: Replaced 6000-167 & 6600-288 boards in the summer of 2013 (Configuration Instructions Included with new board).

See [page 25](#) for a list of replacement circuit board logic chips.

Export Replacement Circuit Board Matrix 1 of 2 (50Hz)

Spa Series	Model Year	Affected Models	Part #	Page
J-LX & J-LXL	2011+	All J-LX & J-LXL Models	6600-726 (Note 1)	18
J-500 LCD	06/2018+	J-585, J-575	6600-426 (Note 4)	18
	2015-05/2018	J-585, J-575	6600-884 (Note 4)	18
J-485 J-475 J-445 J-435	2019	J-485, J-475, J-445, J-435	6600-477 (Note 4)	19
J-445 J-435	04/2018-2018	J-445 & J-435 Only	6600-429 (Note 4)	18
J-400	04/2018+	J-495	6600-423 (Note 4)	18
		J-480, J-470, J-425, J-415 (Not for J-445 & J-435)	6600-421 (Note 4)	
J-445 LCD J-435 LCD	10/2017-3/2018	J-445 & J-435 Models Only	6600-267	19
J-400 LCD Series*	09/2015-03/2018	J-495	6600-767	19
		J-480, J-470, J-465, J-425, J-415 (Not for J-445 & J-435)	6600-765	
J-400 (Complete J-1000 System Load Box)	2012-08/2015	J-495	6600-402	36
	2013-08/2015	J-480, J-470, J-465, J-425, J-415	6600-403	
	2012	J-480, J-470, J-465, J-460, J-425, J-415		
	Mid 12/2009-2011	J-480, J-470, J-465, J-460	6600-306	
J-400 LCD	Mid 9/07-2009	J-480, J-470, J-465, J-460	6600-162 (Note 2)	19
	Mid 9/07 - Mid 2009	J-480, J-470, J-465, J-460	6600-162 (Note 3)	
	2006-8/2007	J-480, J-470, J-460		
J-300 LCD	06/2018+	J-385, J-375, J-365, J-355, J-345, J-335	6600-419 (Note 4)	20
		J-325, J-315 (Convertible and 240V Models)	6600-406 (Note 4)	
J-300 LCD	2016-05/2018	J-385, J-375, J-365, J-355, J-345, J-335	6600-785	20
		J-325, J-315	6600-783	
J-300 LED	2014-2015	J-385, J-375, J-365, J-355, J-345, J-335	6600-297 (Note 8)	21
		J-325, J-315	6600-296 (Note 8)	
	2012-2013	J-375, J-365, J-355, J-345, J-335	6600-726 (Note 6)	
		J-325, J-315	6600-724 (Note 7)	
	2008-2011	J-375	6600-726 (Note 6)	
		J-325	6600-724 (Note 7)	
	2007-2011	J-365, J-355, J-345, J-335	6600-726 (Note 6)	
		J-315	6600-724 (Note 7)	
	2002-2006	J-345, J-340, J-335, J-330	6600-726 (Note 6)	
	2005-2007	J-325		
2002-2006	J-315, J-310	6600-724 (Note 7)		
2004	J-325			
J-300 LCD	2002-2006	J-375, J-370, J-365, J-360, J-355, J-350	6600-162 Board And 6660-279 Chip (Note 5)	22
		J-385, J-380 3-Pump Models Only	Use 6600-097 Bd. And 6660-282 Eprom 6600-402	

Circuit Boards



Export Replacement Circuit Board Matrix 2 of 2 (50Hz)

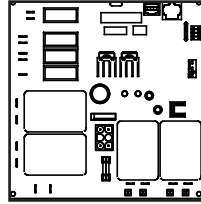
Spa Series	Model Year	Affected Models	Part #	Page
J-200 LCD	2018+	J-280, J-275, J-245, J-235 (No Circ. Pump)	6600-269	22
		J-225, J-215, J-210 Models (No Circ. Pump)		
J-200 LED	2014-2017	J-280, J-275, J-245, J-235 (No Circ. Pump)	6600-720 (Note 10)	22
		J-225, J-215, J-210 Models (No Circ. Pump)	6600-722 (Note 9)	
	2012-2013	J-280, J-275, J-245, J-235 (No Circ. Pump)	6600-720 (Note 10)	
		J-210 Models (No Circ. Pump)	6600-722 (Note 9)	
	2012	J-280, J-270, J-230 (with Circ. Pump)	6600-726 (Note 6)	23
		J-280, J-275, J-270, J-245, J-235 (No Circ. Pump)	6600-720 (Note 10)	22
		J-230 And J-210 Models (No Circ. Pump)	6600-722 (Note 9)	22
	2008-2011	J-230 (with Circ. Pump)	6600-726 (Note 6)	23
		J-230 (No Circ. Pump)	6600-720 (Note 10)	22
	2007-2011	J-280, J-270 (with Circ. Pump)	6600-726 (Note 6)	23
	2005-2007	J-230 (2 Jet Pumps)	6600-720 (Note 10)	23
2005-2008	J-220	6600-722 (Note 9)	22	
2005-2011	J-210			
J-100 LCD	2018+	J-125, J-115	6600-269	24
		J-145, J-135		
J-100 LED	2017	J-125, J-115	6600-722	24
		J-145, J-135	6600-720	
Del Sol	All Years	Del Sol Redondo, Hermosa	6600-722 (Note 9)	24

Note 1: Replaced 6000-167 board in the summer of 2013 (Configuration Instructions Included with new board).
Note 2: Original ~~6600-183~~ board replaced by 6600-162 board.
Note 3: This board replaced the 6600-078 board in spring of 2008.
Note 4: Encrypted Board, not compatible with older model control panels.
Note 5: Circuit Board ~~6600-183~~ board has been replaced by 6600-162 board and 6660-279 Chip ([page 20](#)).
Note 6: Replaced 6000-167 & 6600-288 boards in the summer of 2013 (Configuration Instructions Included with new board).
Note 7: Original 6600-286 and replacement 6600-044 boards been replaced by the 6600-724 board (not illustrated).
Note 8: Original ~~6600-293~~, ~~6600-295~~ boards replaced by 6600-297, 6600-296 boards.
Note 9: Replaced 6600-042 and 6600-289 boards on 2013 and older models.
Note 10: Replaced 6600-046 and 6600-287 boards.
See [page 25](#) for a list of replacement circuit board logic chips.

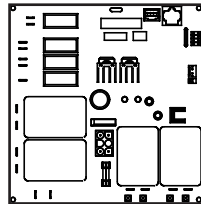
J-LX & J-LXL LED Series (2011+)

J-LX & J-LXL North American And Export 50/60Hz Models

6600-726,
All 2014+ J-LX & J-LXL models, Micro Chip 3.61A Included (See [page 25](#) for details); *Note: Replaced 6000-167 circuit board all applicable models.*



6000-167,
All 2011-2013 J-LX & J-LXL models, Micro Chip 3.60 Included (See [page 25](#) for details); *Note: This board was reissued under the same part number in 2013. The new board includes screw terminals for the forked-lug heater connections used in compatible 2013+ models and spade connectors for previous year models. It is important to note that older in-stock versions of this board are NOT compatible with 2013+ models using forked lug heater connections. The 6000-167 and 6600-726 board are the same boards with Different Micro Chips.*



J-500 LCD Series (06/2018+)

J-500 North American 60Hz Models

6600-427,
All 2-Pump J-500 models 06/2018+. Encrypted board. Will not work with older control panels. When used in pre-06/2018 spas, will need to be reprogrammed with Pick-iT kit.



J-500 Export 50Hz Models

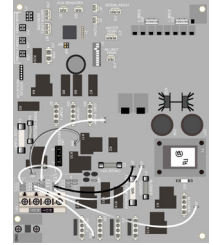
6600-426,
All 2-Pump J-500 models 06/2018+. Encrypted Board. Will not work with older control panels. When used in pre-06/2018 spas, will need to be reprogrammed with Pick-iT kit.



J-500 LCD Series (2015-05/2018)

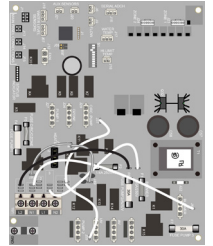
J-500 North American 60Hz Models

6600-885,
All 2015-05/2018 2-Pump J-500 models. Board is microprocessor controlled, includes factory installed jumper wires, and does not require an Eprom.



J-500 Export 50Hz Models

6600-884,
All 2015-05/2018 2-Pump J-500 models. Board is microprocessor controlled, includes factory installed jumper wires, and does not require an Eprom.

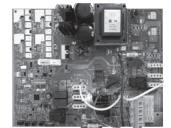


J-400 LCD Series (04/2018+)

J-400 North American 60Hz Models

6600-478,
All 2019+ J485, J475, J445, and J435 models. Encrypted board. Will not work with older control panels.

6600-422,
All 1 or 2-Pump J-400 models 04/2018+, EXCEPT J-435/J-445. Encrypted board. Will not work with older control panels. When used in pre-04/2018 spas needs to be reprogrammed with Pick-iT kit.



6600-430,
J-435/J-445 models 04/2018-2018. Encrypted board. Will not work with older control panels. When used in pre-04/2018 spas needs to be reprogrammed with Pick-iT kit.

6600-476, All 3 Pump J-400 models 04/2018+. Encrypted board. Will not work with older control panels. When used in pre-04/2018 spas needs reprogrammed with Pick-iT kit.

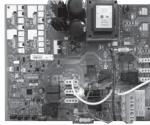
6600-424,
All 3 Pump J-400 models 04/2018+. Replaced by 6600-476.

J-400 Export 50Hz Models**6600-477,**

All 2019+ J485, J475, J445, and J435 models. Encrypted board. Will not work with older control panels.

6600-421,

All 1 or 2-Pump J-400 models 04/2018+, EXCEPT J-435/J-445. Encrypted board. Will not work with older control panels. When used in pre-04/2018 spas needs to be reprogrammed with Pick-iT kit.

**6600-429,**

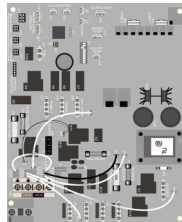
J-435/J-445 models 04/2018+. Encrypted board. Will not work with older control panels. When used in pre-04/2018 spas needs to be reprogrammed with Pick-iT kit.

6600-423,

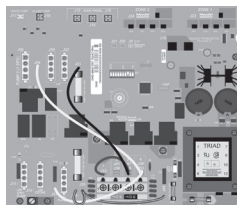
All 3 Pump J-400 models 04/2018+. Encrypted board. Will not work with older control panels. When used in pre-04/2018 spas needs to be reprogrammed with Pick-iT kit.

J-400 LCD Series (09/2015-03/2018)**J-400 North American 60Hz Models****6600-766,**

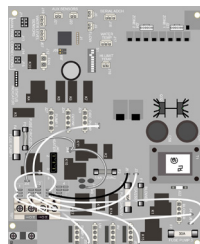
All 09/2015-03/2018 1&2 Pump J-400 models (Not Compatible with 10/2017+ J-445 & J-435 models). Board is microprocessor controlled, includes factory installed jumper wires and does not require an Eprom.



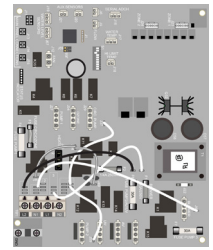
6600-266, For 2-Pump Domestic 60Hz J-445 & J-435 models only. Board is microprocessor controlled, includes factory installed jumper wires and does not require an Eprom.

**6600-768,**

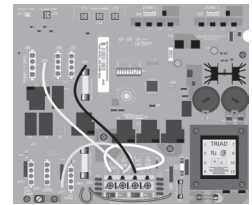
All 09/2015-03/2018 3-Pump J-495 models. Board is microprocessor controlled, includes factory installed jumper wires and does not require an Eprom.

**J-400 Export 50Hz Models****6600-765,**

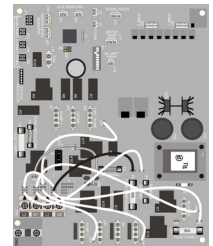
All 09/2015-03/2018 1&2 Pump J-400 models (Not Compatible with 10/2017+ J-445 & J-435 models). Board is microprocessor controlled, includes factory installed jumper wires and does not require an Eprom.



6600-267, For 2-Pump Export 50Hz J-445 & J-435 models only. Board is microprocessor controlled, includes factory installed jumper wires and does not require an Eprom.

**6600-767,**

All 09/2015-03/2018 3-Pump J-495 models. Board is microprocessor controlled, includes factory installed jumper wires and does not require an Eprom.

**J-400 LCD Series (2006-08/2015)****J-400 North American 60Hz Models****Mid 12/2009-08/2015 J-400 Circuit Boards**

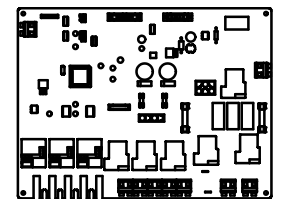
All Mid 12/2009-08/2015 J-400 series hot tubs used a sealed J1000 load box and circuit board. The complete load box must be replaced in these systems. See [page 36](#) for full details.

6600-728,

All 2008-Mid 12/2009 1&2 Pump J-400 models with 1-speed Jet Pump 1. Board is microprocessor controlled and does not require an Eprom. *Note: Replaced 6600-180 board below.*

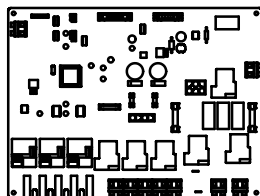
6600-180,

All 2008-Mid 12/2009 1&2-Pump J-400 Models. Board is microprocessor controlled and does not require an Eprom. *Note: Replaced by 6600-728 board above. Also replaced 6600-161 board below.*

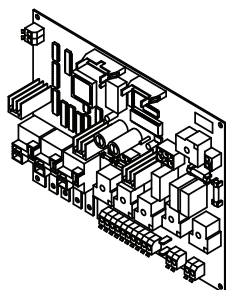


J-400 North American 60Hz Models (Continued)

6600-164,
All 2008-Mid 12/2009
1&2 Pump J-400 Models
without the J-1000 control
system. *Note: Replaced 6600-
098 board below
in Fall 2008. Board memory
changed from a Eprom/Dallas Chip to a Microprocessor
style in early February 2011+. Both board types are fully
interchangeable. Replaced by 6600-728 board above.*



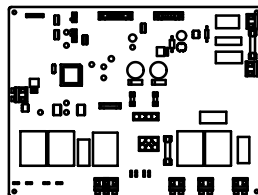
6600-098,
All 2006-2008 1&2 Pump
J-400 Models, 9.51B
EPROM included, *Note:*
*Replaced by 6600-161
board in Fall of 2008.
Replaced by 6600-161 and
6600-728 boards above.*



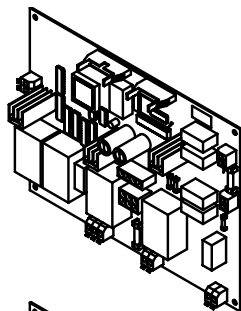
J-400 LCD Series (2006-2015)

J-400 Export 50Hz Models

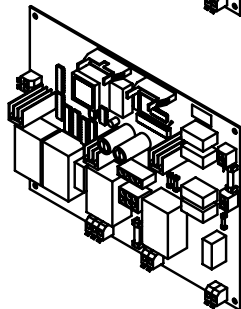
6600-183,
All 9/07-2009
1&2-Pump J-400 Models.
Board is microprocessor
controlled and does not
require an Eprom. *Note:*
*Can Replace with 6600-162
board and 6660-279 chip below.*



6600-162,
All 9/07-2009 J-400 1&2
Pump Models, EPROM
9.51B included (See [page
25](#) for details). *Note:*
*Replaced the 6600-078 board
below in Spring 2008.*



6600-078,
All 2006-8/07 J-400 1&2
Pump Models, EPROM
9.51A included (See
[page 25](#) for details).
*Note: Replaced by 6600-162
board above in Spring 2008.*



J-300 Series (06/2018+)

J-300 North American 60Hz Models

6600-412,
All 1 Pump J-300 models
06/2018+. Encrypted board. Will
not work with older control panels.
When used in pre-06/2018 spas needs to
reprogrammed with Pick-iT kit.



6600-420,
All 2 Pump J-300 models 06/2018+. Encrypted
board. Will not work with older control panels.
When used in pre-06/2018 spas needs to
reprogrammed with Pick-iT kit.

J-300 Export 50Hz Models

6600-406,
All 1 Pump J-300 models
06/2018+. Encrypted board. Will
not work with older control panels.
When used in pre-06/2018 spas needs to
reprogrammed with Pick-iT kit.

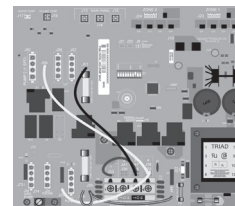


6600-419,
All 2 Pump J-300 models 06/2018+. Encrypted
board. Will not work with older control panels.
When used in pre-06/2018 spas needs to
reprogrammed with Pick-iT kit.

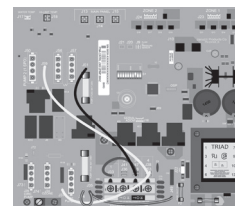
J-300 LCD Series (2016-05/2018)

J-300 North American 60Hz Models

6600-784, All 2016-05/2018
2-Pump Domestic 60Hz
J-385, J-375, J-365, J-355,
J-345, J-335 Models. Board
is microprocessor controlled,
includes factory installed
jumper wires and does not
require an Eprom.

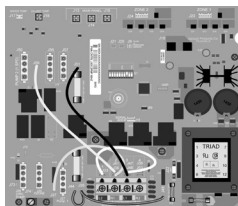


6600-786, All 2016-05/2018
1-Pump Domestic 60Hz
J-325, J-315 Models.
Board is microprocessor
controlled, includes factory
installed jumper wires and
does not require an Eprom.

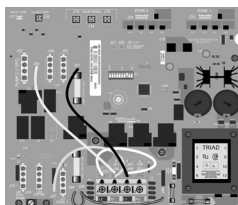


J-300 Export 50Hz Models

6600-785, All 2016-05/2108
2-Pump Export 50Hz J-385,
J-375, J-365, J-355, J-345,
J-335 Models. Board is
microprocessor controlled,
includes factory installed
jumper wires and does not
require an Eprom.



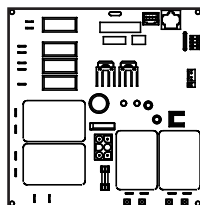
6600-783, All 2016-05/2018
1-Pump Export 50Hz
J-325, J-315 Models.
Board is microprocessor
controlled, includes factory
installed jumper wires and
does not require an Eprom.



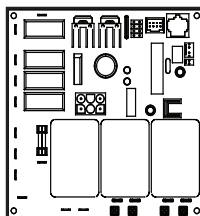
J-300 LED Series (2002-2015)

J-300 North American 60Hz And Export 50Hz Models

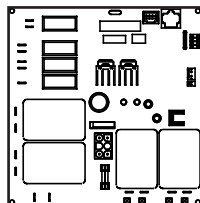
6600-297, All 2014-2015
2-Pump J-385, J-375, J-365,
J-355, J-345, J-335 Models;
Micro Chip 3.83 Included (See
[page 25](#) for details); *Note:*
Replaces 6600-293 board below.



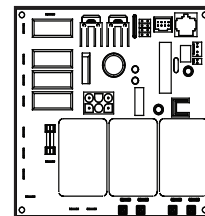
6600-296, All 2014-2015
1-Pump J-325, J-315 Models,
Micro Chip 3.83 Included (See
[page 25](#) for details); *Note:*
Replaces 6600-295 board below.



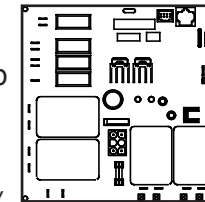
6600-293, All 2014-2015
2-Pump J-385, J-375, J-365,
J-355, J-345, J-335 Models;
Micro Chip 3.82 Included
(See [page 25](#) for details);
Note: Supports models with the
CLEARARRAY® On-Demand
function. Replaced by 6600-297
board above.



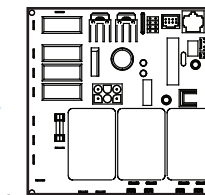
6600-295, All 2014-2015
1-Pump J-325, J-315; Micro
Chip 3.82 Included (See [page
25](#) for details); *Note:* Supports
models with the CLEARARRAY®
On-Demand function. Replaced by
6600-296 board above.



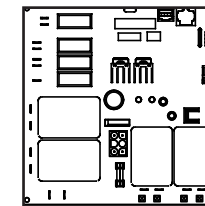
6600-167, All 2012-2013
2-Pump J-375, J-365, J-355,
J-345, J-335 Models; Micro Chip
3.61A Included (See [page 25](#)
for details); *Note:* This board was
reissued under the same part number
in 2013. The new board includes screw
terminals for the forked-lug heater
connections used in compatible 2013-2015 models and
spade connectors for previous year models. It is important
to note that older in-stock versions of this board are NOT
compatible with 2013-2015 models using forked lug heater
connections. Replaced by 6600-726 board (right).



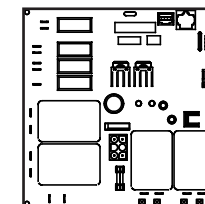
6600-044, All 2012-2013
1-Pump J-325, J-315; Micro
Chip 3.61A Included (See [page
25](#) for details); *Note:* This
board was reissued under the same
part number in 2013. The new board
includes screw terminals for the forked-lug heater
connections used in compatible 2013-2015 models and
spade connectors for previous year models. It is important
to note that older in-stock versions of this board are NOT
compatible with 2013-2015 models using forked lug
heater connections. Replaced by the 6600-724 board (not
illustrated). These are the same boards with different Micro
Chips.



6600-726, All 2007-2013
2-Pump J-375, J-365,
J-355, J-345, J-335 Models,
Micro Chip 3.61A Included
(See [page 25](#) for details);
Note: Replaced 6600-167 board (left)
and 6600-288 board (below).



6600-288,
Fits 2002-2011 2-Pump Models
Including:
A. 2008-2011 J-375
B. 2007-2011 J-365, J-355,
J-345, J-335
C. 2005-2007 J-325 (240V Model)
D. 2002-2006 J-345, J-335, J-340, J-330
E. 2002-2003 J-320
F. Micro Chip included (See [page 25](#) for
details)
Note: Replaced by 6600-726 Circuit Board above.



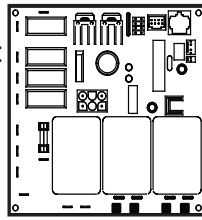
6600-286,

Fits 2007-2011 1-Pump Models:

- A. 2008-2011 J-325
- B. 2007-2011 J-315
- C. 2002-2006 J-315, J-310
- D. 2004 J-325
- E. Micro Chip included (See

[page 25](#) for details)

Note: Replaced by 6600-724 board (not illustrated). These are the same boards with different Micro Chips.

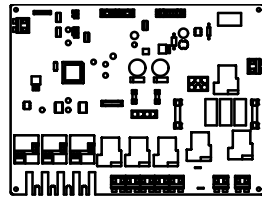


J-300 LCD Series (2002-2006)

**J-300 North American
60Hz Models**

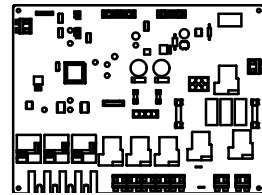
6600-730,

All 2008-Mid 12/2009 1&2 Pump J-300 LCD models with 2-speed Jet Pump 1. Board is microprocessor controlled and does not require an Eprom. *Note: Replaced 6600-180 board below*



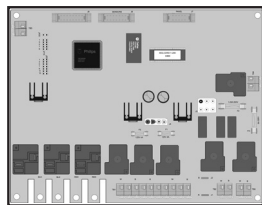
6600-180,

Universal Board for All 2002-2006 J-300 1&2-Pump Models. Board is microprocessor controlled and does not require an Eprom. *Note: Replaced by 6600-730 board above. Also replaced 6600-092 board below.*



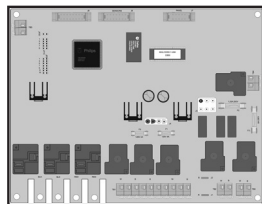
6600-092,

All 2002-2006 J-300 1&2-Pump Models; Eprom 9.50B included, *Replaced by 6600-730 and 6600-180 boards above.*



6600-101,

2002-2006 3-Pump J-385 & J-380 Models; Eprom 9.70B included; *Note: The 6600-092 and 6600-101 boards are identical with the exception of their Eprom chip.*

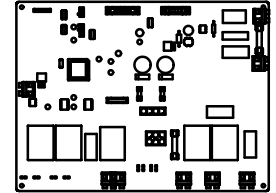


J-300 LCD Series (2002-2006)

**J-300 Export
50Hz Models**

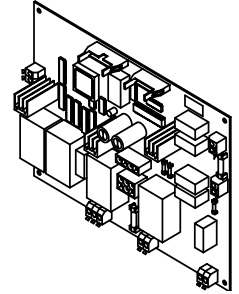
6600-183,

All 2002-2006 J-300 1&2-Pump Models (Microprocessor Based); *Note: Replaced 6600-093 Board Below. Can Replace with 6600-162 board and 6660-279 chip ([page 20](#)).*



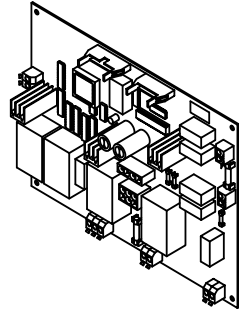
6600-093,

All 2002-2006 J-300 1&2 Pump Models; Eprom 9.50B Included; *Note: Replaced by 6600-183 board (left).*



6600-102,

All 2004-2006 3-Pump J-380 & J-385 Models; Eprom 9.70B included; *Note: Replace with the 6600-097 Circuit Board (Not Illustrated) and 6660-282 Eprom).*

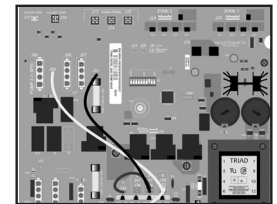


J-200 LCD Series (2018+)

**J-200 North American
60Hz Models**

6600-268,

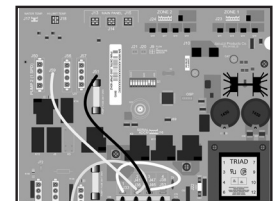
All 2018+ 1&2-Pump J-200 & J-100 Models (Microprocessor Based)



**J-200 Export
50Hz Models**

6600-269

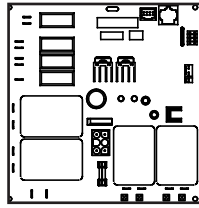
All 2018+ 1&2-Pump J200 & J100 Models (Microprocessor Based)



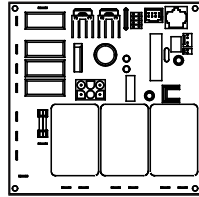
J-200 LED Series

North American 60Hz & Export 50Hz Non-Circulation Pump Models

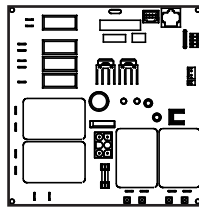
6600-720,
All 2014-2017 J-280, J-275,
J-245, J-235 2-Pump Models,
Micro Chip 5.60A Included
(See [page 25](#)); *Note:*
Replaced 6600-046 board below
for J-280, J-275, J-245 and J-235
models only.



6600-722,
All 2014-2017 J-210 and 2016-
2017 J-225, J-215 1-Pump
Models, Micro Chip 5.60A
Included (See [page 25](#)); *Note:*
Replaced 6600-042 board below
for J-210 models only.

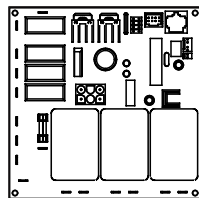


6600-046,
A. 2012-2013 All J-280,
J-275, J-270, J-245, J-235
Models (No. Circ.)
B. 2012 J-230 60Hz North
America Models (No. Circ.)
C. Micro Chip included (See
[page 25](#));



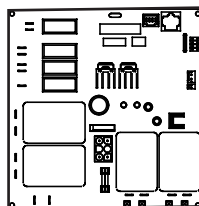
Note: This board was reissued under the same part number in 2013. The new board includes screw terminals for the forked-lug heater connections used in compatible 2013 models and spade connectors for previous year models. It is important to note that older in-stock versions of this board are NOT compatible with 2013 models using forked lug heater connections. Replaced by 6600-720 board above. These are the same boards with different Micro Chips.

6600-042,
A. 2012-2013 J-210 (No. Circ.)
B. 2012 J-230 50Hz Export
Models (No Circ.)
C. Micro Chip included (See
[page 25](#));



Note: This board was reissued under the same part number in 2013. The new board includes screw terminals for the forked-lug heater connections used in compatible 2013 models and spade connectors for previous year models. It is important to note that older in-stock versions of this board are NOT compatible with 2013 models using forked lug heater connections. Replaced by 6600-722 board above. These are the same boards with different Micro Chips.

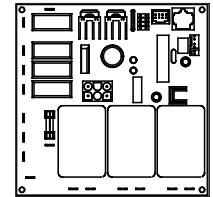
6600-287,
A. 2005-2011 J-230 60Hz
North American Models
(No Circ.)
B. 2005-2007 J-230 50Hz
Export Models (No Circ.)
C. 2007-2011 J-280, J-270
(No Circ.) All; introduced mid-year
D. Micro Chip included (See [page 25](#));
Note: Replaced by 6600-720 board above.. These are the
same boards with different Micro Chips.



J-200 LED Series

North American 60Hz & Export 50Hz Non-Circulation Pump Models

6600-289;
J-200 LED Models:
A. 2008-2011 J-230 50Hz
Export Models (No. Circ.)
B. 2005-2011 J-210 (All)
C. 2005-2008 J-220 (All)
D. Micro Chip included (See
[page 25](#)).

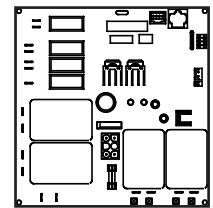


Note: Replaced by 6600-722 board (left). These are the same boards with different Micro Chips.

J-200 LED Series

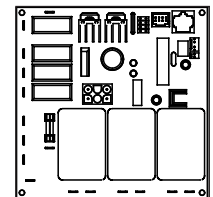
North American 60Hz & Export 50Hz Circulation Pump Models

6600-726,
A. 2012 All J-280, J-270
Models
B. 2012 60Hz North American
J-230 Models
C. Micro Chip Included (See
[page 25](#));



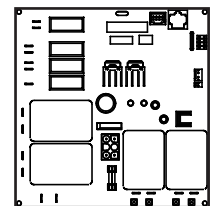
Note: Replaced 6600-167 board below. These are the same boards with different Micro Chips.

6600-044,
A. 2012 J-230 50Hz Export
LED Models
B. Micro Chip Included (See
[page 25](#))



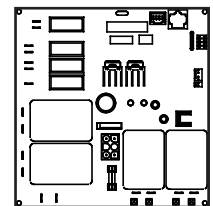
Note: Replaced by the 6600-724 board (not illustrated). These are the same boards with different Micro Chips.

6000-167,
A. 2012 All J-280, J-270
Models
B. 2012 60Hz North American
J-230 Models
C. Micro Chip Included (See
[page 25](#))



Note: This board was reissued under the same part number in 2013. The new board includes screw terminals for the forked-lug heater connections used in compatible 2013+ models and spade connectors for previous year models. It is important to note that older in-stock versions of this board are NOT compatible with 2013+ models using forked lug heater connections. Replaced by 6600-726 Circuit Board above.

6600-288,
A. 2008-2011 J-230 60Hz
North American Models
B. 2007-2011, All J-280 &
J-270 models - mid-year
C. Micro Chip Included (See
[page 25](#))



Note: Replaced by 6600-726 Circuit Board Above.

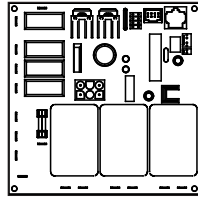
J-200 LED Series

North American 60Hz & Export 50Hz Circulation Pump Models

6600-286,

- A. 2008-2011 J-230 50Hz Export Models
- B. Micro Chip included (See [page 25](#))

Note: Replaced by the 6600-724 board (not illustrated). These are the same boards with different Micro Chips.

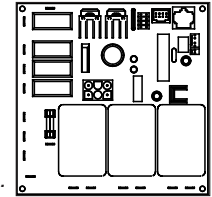


Del Sol Series

North American 60Hz & Export 50Hz

6600-289,

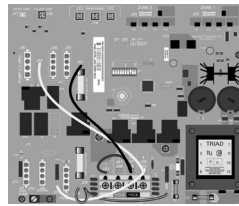
All Del Sol LED Models (Hermosa and Redondo), Micro Chip included (See [page 25](#)). *Note: Replaced by 6600-722 board (left). These are the same boards with different Micro Chips.*



J-100 LCD Series (2018+) North American 60Hz

6600-268,

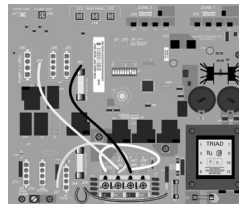
All 2018+ 1&2-Pump J-100 & J-200 Models (Microprocessor Based)



Export 50Hz

6600-269

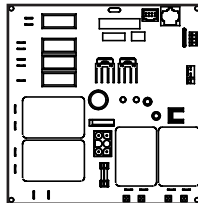
All 2018+ 1&2-Pump J-100 & J-200 Models (Microprocessor Based)



J-100 LED Series (2016-2017) North American 60Hz & Export 50Hz

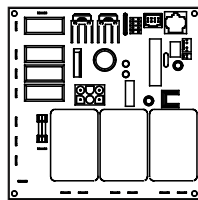
6600-720,

All 2016-2017 J-135, J-125 2-Pump Models, Micro Chip 5.60A Included (See [page 25](#))



6600-722,

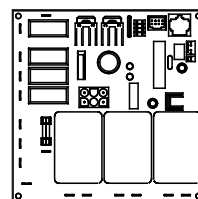
All 2016-2017 J-125, J-115 1-Pump Models, Micro Chip 5.60A Included (See [page 25](#))



Del Sol LED Series North American 60Hz & Export 50Hz

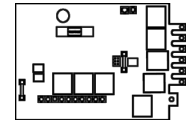
6600-722,

All Del Sol LED Models (Hermosa And Redondo), Micro Chip 5.60A Included (See [page 25](#))



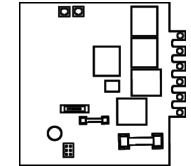
Older Models (2002 And Older)

2600-011, Platinum Series (JWB# R797000)



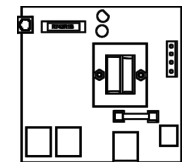
2600-015, For H136 Control Box, Not Shown (JWB# H311000)

2600-014, Select Series, (1/2 Hour Filter Cycles); Replaced 2600-016 board for H716 Control Box below (JWB# J852000)

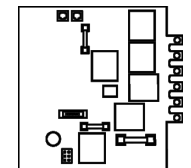


2600-016, Select Series (1/2 Hour Filter Cycles), replaced by 2600-014 board above.

2600-020, Palio Models (JWB# R796000)

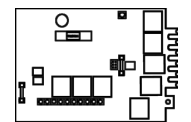


2600-024, Circuit Board: Digital Duplex - Palio Upgrade (JWB# S927000); *Note: Must convert system to digital controls. Call for details*



2000-601, PCB Assembly, Balboa (JWB# J118000)

2600-017, Model 106/7 (JWB# F809000)



2600-018, Model K286 (JWB# K623000)

2600-019, Model 108/9 (JWB# F81000)

2600-005, Model R576/R574 Control Box, Replaced 2600-104 board for R576 & R574 Control Box Below (JWB# R790000)

2600-104,

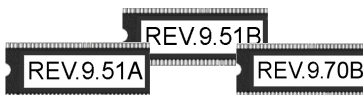
Model R576 & R574 Control Box
 A. Replaced by 2600-005 board above.
 B. JWB# R790000, Older Models (2002 And Older), J-200, And Del Sol Series

Replacement Logic Chip Matrix

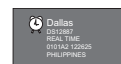
Chip Identifier



Micro Chip



EPROM Chip



Pal Chip

Hot Tub	Model Year	Compatible Models	Chip Part #	Chip Type	Chip Rev.	Chip Details	Page
J-LX J-LXL	2011+	All J-LX & J-LXL Boards	6660-285	Micro Chip	3.61A (Note 1)	1/2 Hour Filter Cycles Overtemp 106°F Programmable Circ. Smart Logic (Note 6)	18
J-400 LCD	2008-2009	All J-400 Boards	6660-268	Eprom	9.51B	Programmable Filter Cycles	19
	2006-2007	All J-400 Boards	6660-328	Eprom	9.51A		
J-300 LED	2014-2015	All 1-Pump and 2-Pump Boards (Spas with Circulation Pumps)	T.B.D. 6660-289	Micro Chip	3.83 3.82 (Note 7)	1/2 Hour Filter Cycles Overtemp 106°F Programmable Circ Smart Logic (Note 6)	21
	2012-2013	All Boards (Spas with Circulation Pumps)	6660-285	Micro Chip	3.61A (Note 1)	1/2 Hour Filter Cycles Overtemp 106°F (Note 2) Programmable Circ. Smart Logic (Note 6)	
	2004-2011	All Boards (Spas with Circulation Pumps)	6660-277	Micro Chip	3.57	1/2 Hour Filter Cycles Overtemp 106°F (Note 2) Programmable Circ.	
	2002-2003	All Boards (Spas with Circulation Pumps)	6660-285	Micro Chip	3.61A (Note 1)	2 Hour Filter Cycles 24-Hour Circ. Cycle	
J-300 LCD	2002-2006	All 2-Pump Boards	6660-279	Eprom	9.50B	For 2 Jet Pumps	22
		J-380 & J-385 3-Pump Spas Boards Only	6660-282	Eprom	9.70B	For 3 Jet Pumps	
		All Boards	6760-024	Dallas Timer	-	Timing Chip For All 2002-2006 Boards	
J-200 LED	2012-2017	All Boards (Spas without Circulation Pumps)	6660-287	Micro Chip	5.60A (Note 3)	1/2 Hour Filter Cycles Overtemp 106°F (Note 3)	22
	2012	All Boards (Spas with Circulation Pumps)	6660-285	Micro Chip	3.61A (Note 1)	1/2 Hour Filter Cycles Overtemp 106°F Programmable Circ. Smart Logic (Note 6)	
	2004-2011	All Boards (Spas with Circulation Pumps)	6660-277	Micro Chip	3.57	1/2 Hour Filter Cycles Overtemp 106°F (Note 2) Programmable Circ.	
	2006 to 2011	All Boards (Spas without Circulation Pumps)	6660-284	Micro Chip	5.57 (Note 5)	Overtemp 106°F (Note 4) Offers 60A Logic for J-230 Models	
	2005	All Boards (Spas without Circulation Pumps)	6660-276	Micro Chip	5.54	N/A	
J-100 LED	2017	All Boards (Spas without Circulation Pumps)	6660-287	Micro Chip	5.60A	1/2 Hour Filter Cycles Overtemp 106°F	24
Del Sol	All Years All Models	All Boards (Spas without Circulation Pumps)	6660-287	Micro Chip	5.60A (Note 3)	NA	24



Circuit Boards

Note 1: 3.61A chip replaces 3.60, 3.59 & 3.58, 3.53 chips. New chip includes Smart Logic. The Smart Logic feature automatically deducts any circulation pump run time occurring after the programmed filter cycle ends from the next cycle to save energy.
 Note 2: The overtemp 106°F feature was offered with 2010+ chip revisions only.
 Note 3: Chip replaces version 5.60, 5.59, 5.58 and 5.54.
 Note 4: Chip replaced version 5.56.
 Note 5: Chip replaced by version 5.57 (6660-284) under the same part number. 5.56 Chip has been discontinued.
 Note 6: Smart logic feature deducts non-programmed heat call run times from next day's filter cycle program to save energy.
 Note 7: 3.83 chip replaces 3.82 and 3.80 chips and includes revised Summer Logic.